

Is it more than COPD?

Discover how comfortable, effective, connected airway clearance therapy can help your at-risk respiratory patients.



AFFLOVEST®

MOBILE AIRWAY CLEARANCE THERAPY

Tactile
MEDICAL®

Prevention is best for at-risk patients.

Airway Clearance Therapy is a cornerstone therapy for the prevention and treatment of pulmonary disease and neurorespiratory dysfunction.¹ It can help reduce recurring hospitalizations and improve your at-risk patients' overall health.^{2,3}

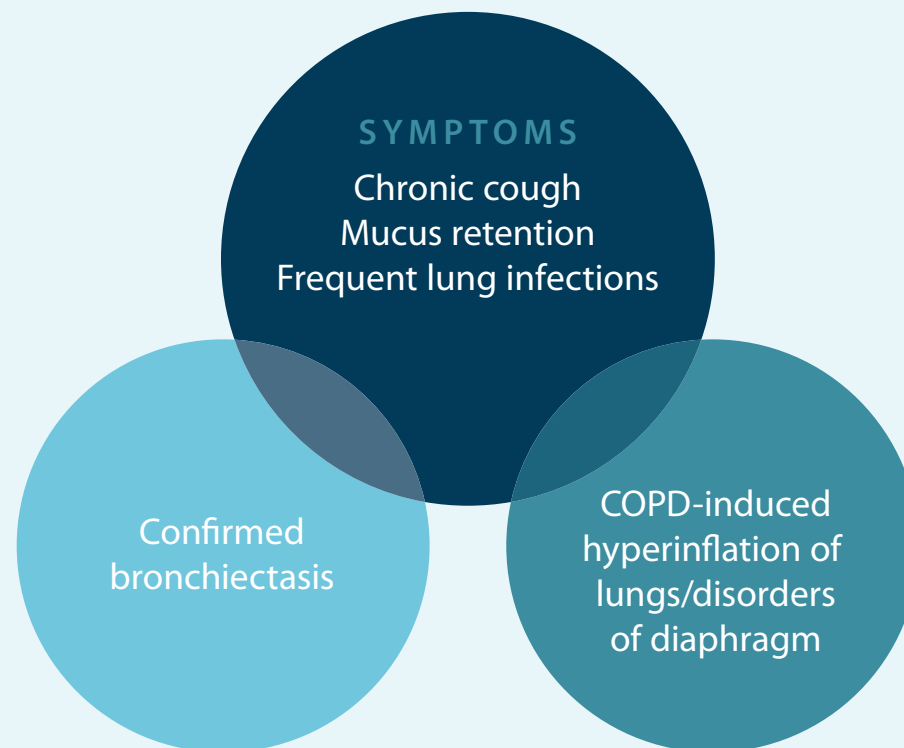
Who is the at-risk respiratory patient? It is a patient who has:

- Compromised pulmonary system
- History of pneumonia
- Chronic respiratory conditions
- COPD
- Bronchitis
- Emphysema
- Bronchiectasis
- Disorders of the diaphragm



When symptoms overlap, finding answers matter.

Reaching an accurate diagnosis for patients suffering from chronic airway diseases can be challenging because the symptoms often overlap. Despite these similarities, each disease has a unique impact on lung function, acute exacerbations, and mortality.⁴ Determining the root cause of your patient's mucus retention will enable you to create the best care plan for improving their quality of life.⁵



Chronic Obstructive Pulmonary Disease.

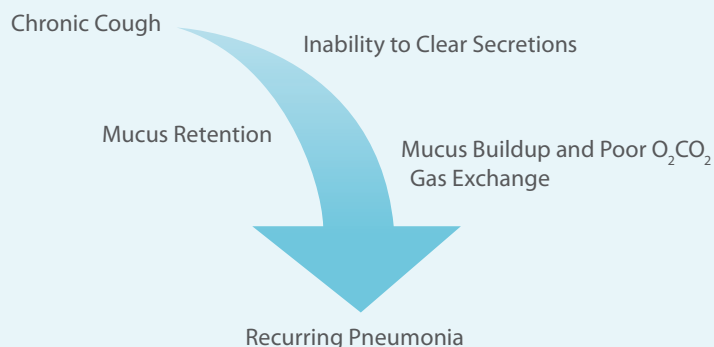
Chronic Obstructive Pulmonary Disease (COPD) is a group of chronic and progressive diseases that affect the lungs and lead to reduced airflow and breathing difficulty.

COPD symptoms include:

- Chronic cough
- Shortness of breath (dyspnea)
- Wheezing
- Frequent respiratory infections/ pneumonias
- Producing excessive mucus/ mucus plugging



As COPD progresses, airways thicken and grow inflamed, and tissue where oxygen is exchanged is destroyed. Airflow in and out of the lungs decreases. Airways produce more mucus than usual, which can cause clogging.



Airway clearance therapy can make a real difference – helping your COPD patients improve lung function and health-related quality of life, while avoiding COPD exacerbations, hospitalizations, and mortality.⁶

Is it bronchiectasis or COPD?

Bronchiectasis (BE) is a chronic condition in which the airways become thickened from repeated inflammation and/or infections. Treatment can be tricky, because BE often presents as COPD but doesn't respond to COPD therapy.

Many at-risk patients have more than one condition, like BE along with asthma or COPD. That's why an accurate diagnosis is so important – to make sure each patient gets the right care for their unique needs.⁵

Look for these signs that may point to BE:

- Daily productive cough for at least six months
- Frequent coughing episodes with mucus that is thick, yellow, green or discolored
- Three or more courses of antibiotics prescribed for a lung infection or bronchitis in the past 12 months
- Hospitalization for a respiratory or lung infection in the last 12 months

By identifying BE in your COPD patients, you can treat the root cause of the recurrent infections with airway clearance therapy.

Studies show BE is much more prevalent than what's being diagnosed:

42% of COPD patients may have BE⁷

5 million COPD patients have BE

70,000 new patients are diagnosed each year⁸

Hyperinflation of the lungs.

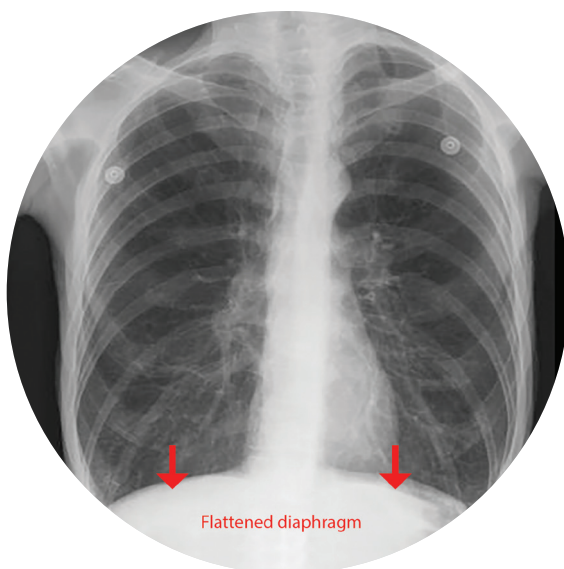
In COPD, the lungs can sometimes become hyperinflated, which puts extra pressure on the diaphragm.⁹ This makes it harder for patients to cough, clear mucus, and fight off infections.

Chest X-rays of COPD patients may reveal enlarged lungs and a flattened diaphragm. Diaphragmatic weakness or paralysis may be seen in diseases that cause lung hyperinflation.¹⁰

Symptoms of a flattened diaphragm include:

- Coughing or wheezing
- Production of excess mucus
- Difficulty breathing
- Continuous efforts to catch their breath
- Tightness in the chest

Airway clearance therapy can make a meaningful difference – helping patients clear mucus, reduce infections, and stay out of the hospital.



Slow the vicious vortex with airway clearance therapy.

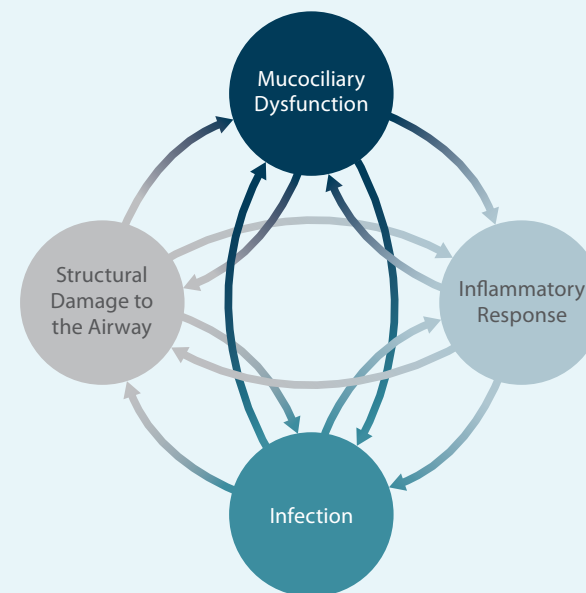
Airway obstruction and damage may result from recurring mucus buildup, infection, and inflammation – also known as the vicious vortex of bronchiectasis.

Airways clearance therapy offers an effective, non-pharmacological way to address every aspect of the vicious vortex – helping your patients breathe easier and live better.



Slow the vicious cycle with AffloVest HFCWO

The Vicious Vortex of Bronchiectasis



Want to learn more about how airway clearance therapy can help your patients? We're here for you – contact us at afflovestinfo@tactilemedical.com.

Tactile Medical is a leader in developing at-home therapies for people suffering from underserved, chronic conditions including bronchiectasis, neuromuscular disorders, and cystic fibrosis by helping them live better and care for themselves at home.

Visit afflovest.com to prescribe our patient-preferred therapy.



References

1. Volsko, T. Airway Clearance Therapy: Finding the Evidence. *Respiratory Care*. 2013; 58(10):1669–78.
2. O’Neill, K. et al. Airway Clearance, Mucoactive Therapies and Pulmonary Rehabilitation in Bronchiectasis. *Respirology* 2019; 24(3):227–237.
3. McShane, P et al. Concise Clinical Review: Non-Cystic Fibrosis Bronchiectasis. *Am J Respir Crit Care Med* 2013;188(6):647–656.
4. Papaiwannou, A. et al. Asthma-Chronic Obstructive Pulmonary Disease Overlap Syndrome (ACOS): Current Literature Review. *J Thorac Dis*. 2014; 6(S1):S146–S151
5. Aksamit, T. et al. Bronchiectasis and Chronic Airway Disease: It Is Not Just About Asthma and COPD. *CHEST*. 2018;154(4):737–739.
6. Ramos, F. et al. Clinical Issues of Mucus Accumulation in COPD. *Int J Chron Obstruct Pulmon Dis*. 2014; 9:139–150.
7. Kosmas, E. et al. Bronchiectasis in Patients with COPD: An Irrelevant Imaging Finding or a Clinically Important Phenotype? *CHEST*. 2016; 150(4):894A.
8. Weycker, D. et al. Prevalence and Incidence of Non-cystic Fibrosis BE Among US Adults in 2013. *Chron Respir Dis* 2017;14(4):377–384.
9. Gagnon, P. et al. Pathogenesis of Hyperinflation in Chronic Obstructive Pulmonary Disease. *Int J Chron Obstruct Pulmon Dis*. 2014; 9:187–201.
10. McCool, F. et al. Dysfunction of the Diaphragm. *N Engl J Med*. 2012; 366(10):932–942.

Tactile Medical

3701 Wayzata Blvd, Suite 300 Toll Free Tel: 800.575.1900
Minneapolis, MN 55416 USA Toll Free Fax: 866.569.1912 afflovest.com

Tactile
MEDICAL®